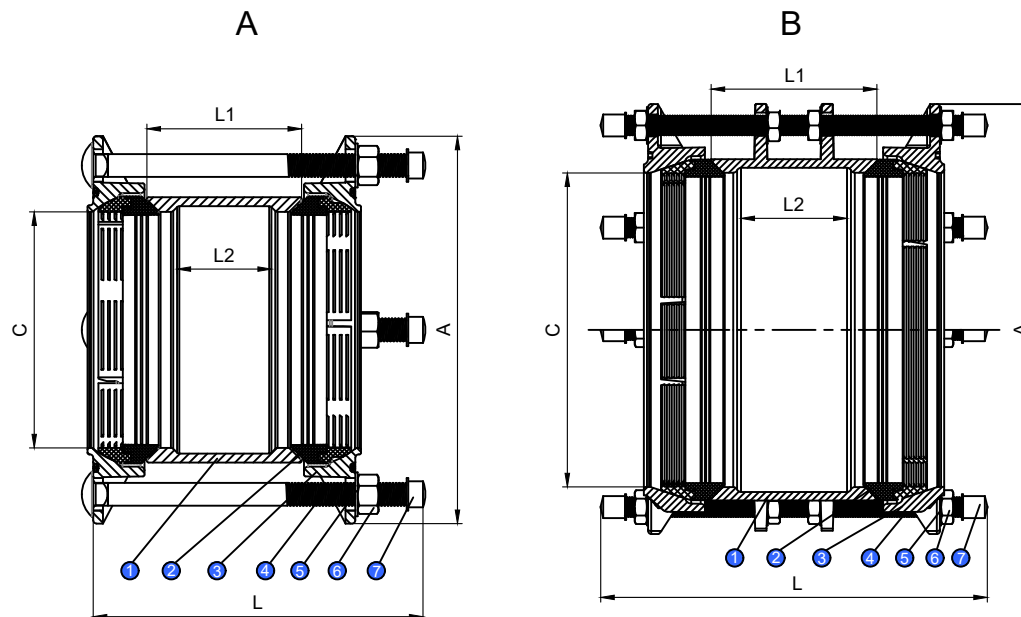


Features

- Ductile Iron GGG50 material with FBE coated.
- PN10.PN 16 working pressure.
- Equipped with Dacromet Coated Steel bolts, nuts.
- EPDM or NBR rubber seals .
- High Tolerance Mechanical Pipe Fittings



1:Flange dimensions according to EN1092-2
 2:Any definite information kindly contact with Hiwa directly.

Material Specification:

No.	Parts Name	Material	Specification
1	Body	Ductile Iron	GGG50
2	Sealing Ring	Rubber+Brass	EPDM+Brass
3	End Ring	Ductile Iron	GGG50
4	Bolts	Dacromet Coated Steel	
5	Washer	Dacromet Coated Steel	
6	Nut	Dacromet Coated Steel	
7	Cap	Plastic	

DRAWER	TOLERANCE	MATERIAL:	UNIT:mm
CHECK	SCALE	Tensile Restrained Coupling	
APPROVAL	DATE		
		FC802	
		REV	202001A